

MS-DOS Prompt - FB

Down: 1 Qtr: 4  
 ToGo: 6 Drive: 7-88 Used 01:27  
 Ball: UA95  
 <\*> UA..... 0 0 7 7 - 14  
 MU..... 14 36 0 0 - 50

1st downs 16 26  
 Rushes-Yds 32-66 51-209  
 Pass Yds 149 302  
 Passing 26-9-1 24-20-0  
 Plays 58-215 75-511  
 Avg/play 3.7 6.8  
 Kick ret 5-102 3-60  
 Punt ret 1-8 1-7  
 Int ret 0-0 1-32  
 Fumb ret 0-0 0-0  
 Fumb-Lost 5-2 2-0  
 Penalties 6-51 11-122  
 Punts 7-33.4 3-44.0  
 Possession 23:40 36:20  
 3rd-Dn Eff 2/12 7/14  
 4th-Dn Eff 1/2 1/4  
 T/O left 2 2

Play Input

Game setup

- Teams
- Game info
- Starters
- Participation report
- Game notes

Rules

Visitor roster

Home roster

Remote display

[0 pending]

## Game Setup

Setup teams, starters, rules, make changes to rosters.

MS-DOS Prompt - FB

Down: 1 Qtr: 4  
 ToGo: 6 Drive: 7-88 Used 01:27  
 Ball: UA95  
 <\*> UA..... 0 0 7 7 - 14  
 MU..... 14 36 0 0 - 50

1st downs 16 26  
 Rushes-Yds 32-66 51-209  
 Pass Yds 149 302  
 Passing 26-9-1 24-20-0  
 Plays 58-215 75-511  
 Avg/play 3.7 6.8  
 Kick ret 5-102 3-60  
 Punt ret 1-8 1-7  
 Int ret 0-0 1-32  
 Fumb ret 0-0 0-0  
 Fumb-Lost 5-2 2-0  
 Penalties 6-51 11-122  
 Punts 7-33.4 3-44.0  
 Possession 23:40 36:20  
 3rd-Dn Eff 2/12 7/14  
 4th-Dn Eff 1/2 1/4  
 T/O left 2 2

Game Info

U # Akron Record: 0-5 Conf:  
 M # Miami Record: 2-3-1 Conf:

Date: 10/08/94 Schedule note:  
 Place: Miami University  
 Stadium: Yager Stadium

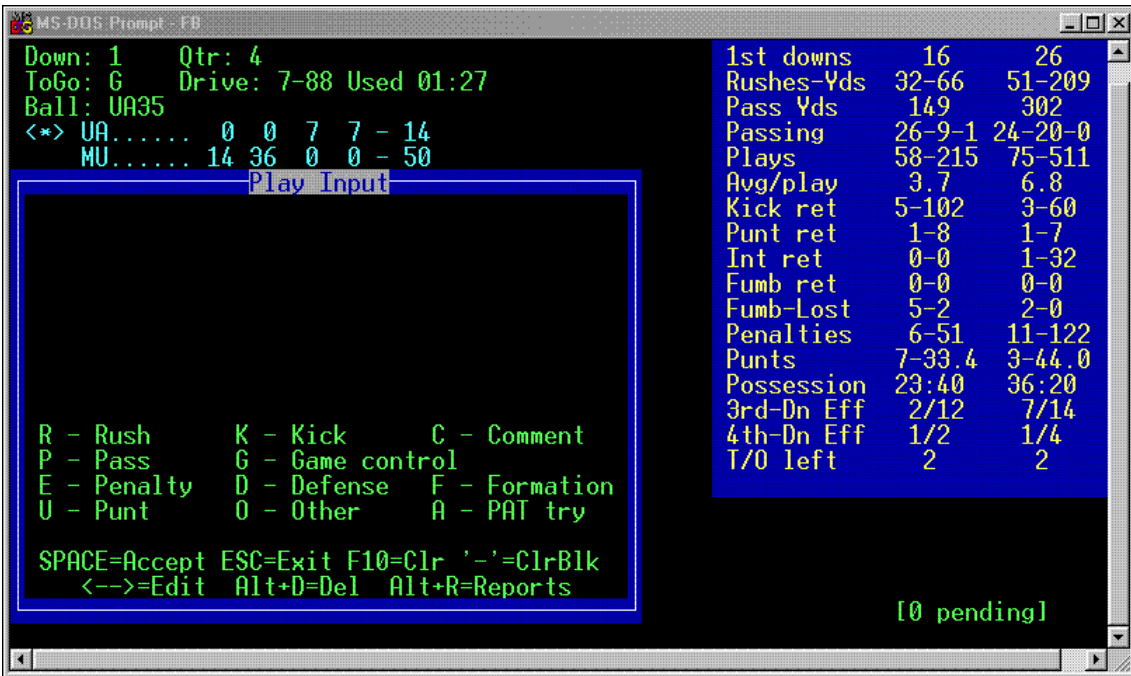
Conference game: Y Referee: Nick Define  
 Neutral site: N Umpire: Sam Dudich  
 Night game: N Linesman: Norm Eubank  
 Post-season: Line judge: Jeff Bauer  
 Back judge: R. Zivic  
 Start Time: 1:00PM Field judge: E. Wodzisz  
 End Time: 3:54PM Side judge: Joe Duncan  
 Total Time: 2:54 Scorer:  
 Attendance: 11604

Temp: 78 Wind: S 10 mph  
 Weather: Sunny

pending]

## Game Information

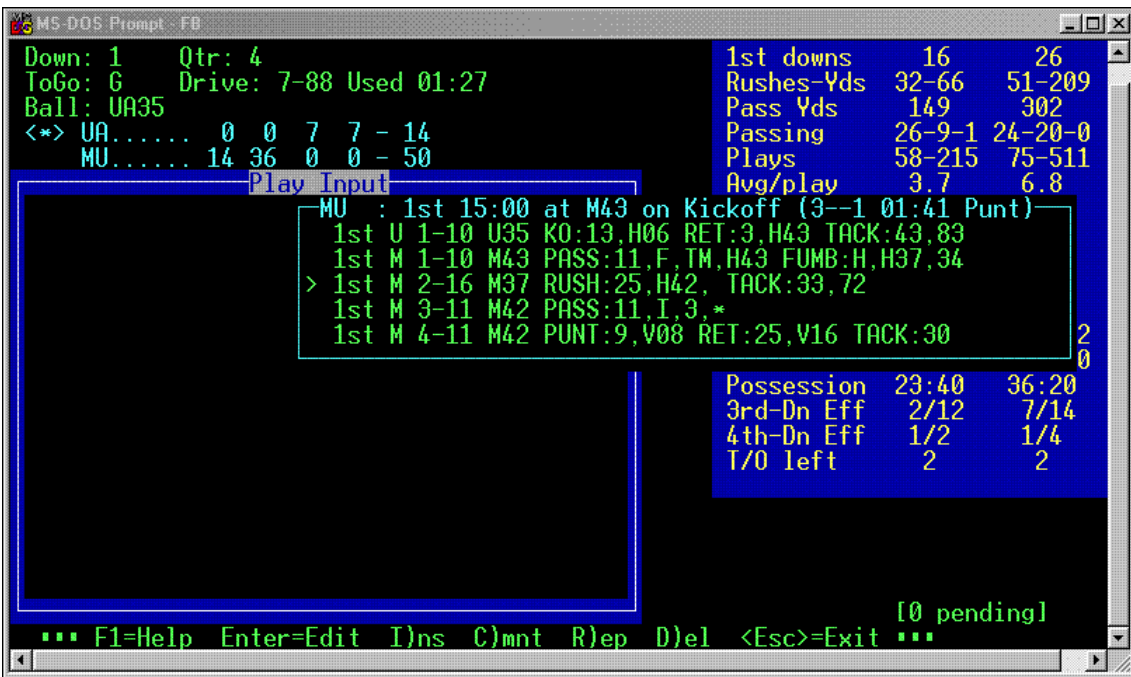
Input game day data, and finalize the boxscore with team records, attendance.



### Input Plays

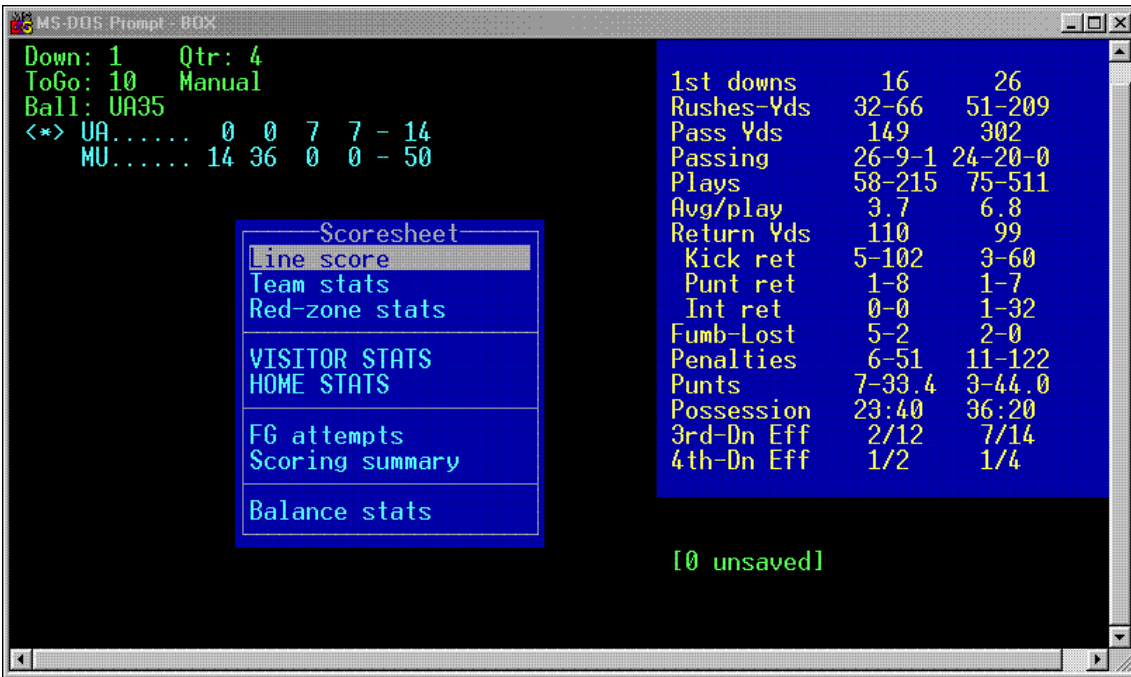
Input screen will display current drive information, linescore and team stats.

Input codes display on the screen as the game is scored.



### Edit Plays

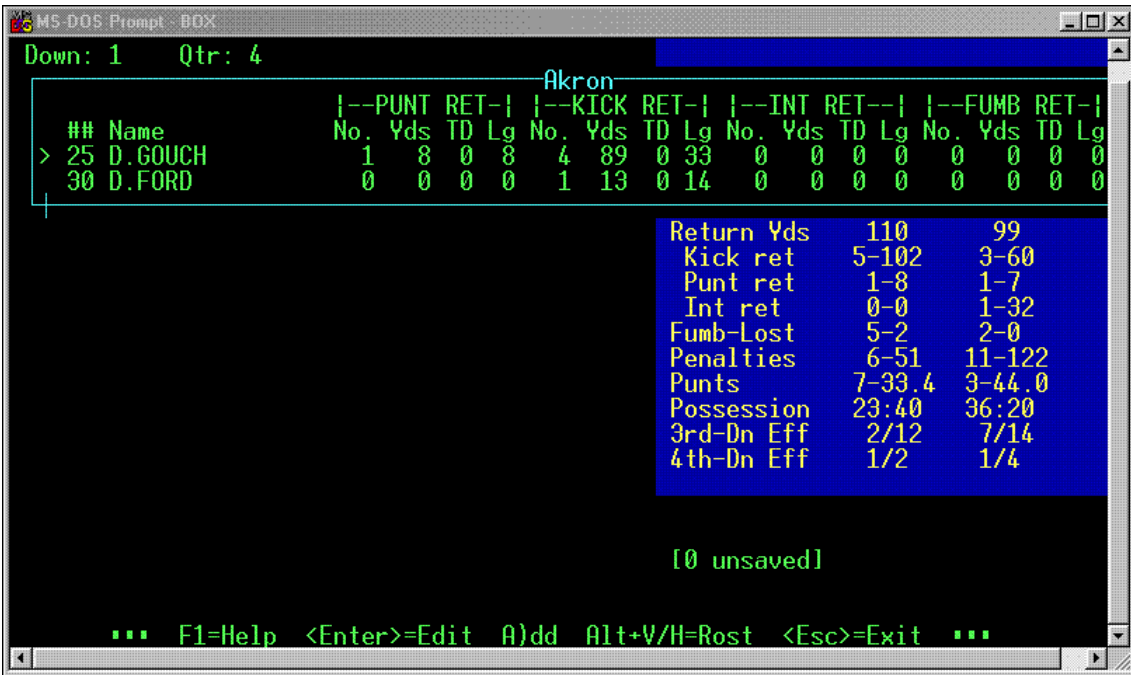
Select the drive, or select last 15 plays, or select quarter to edit, insert, replace or delete plays.



### Manual Entry -Team

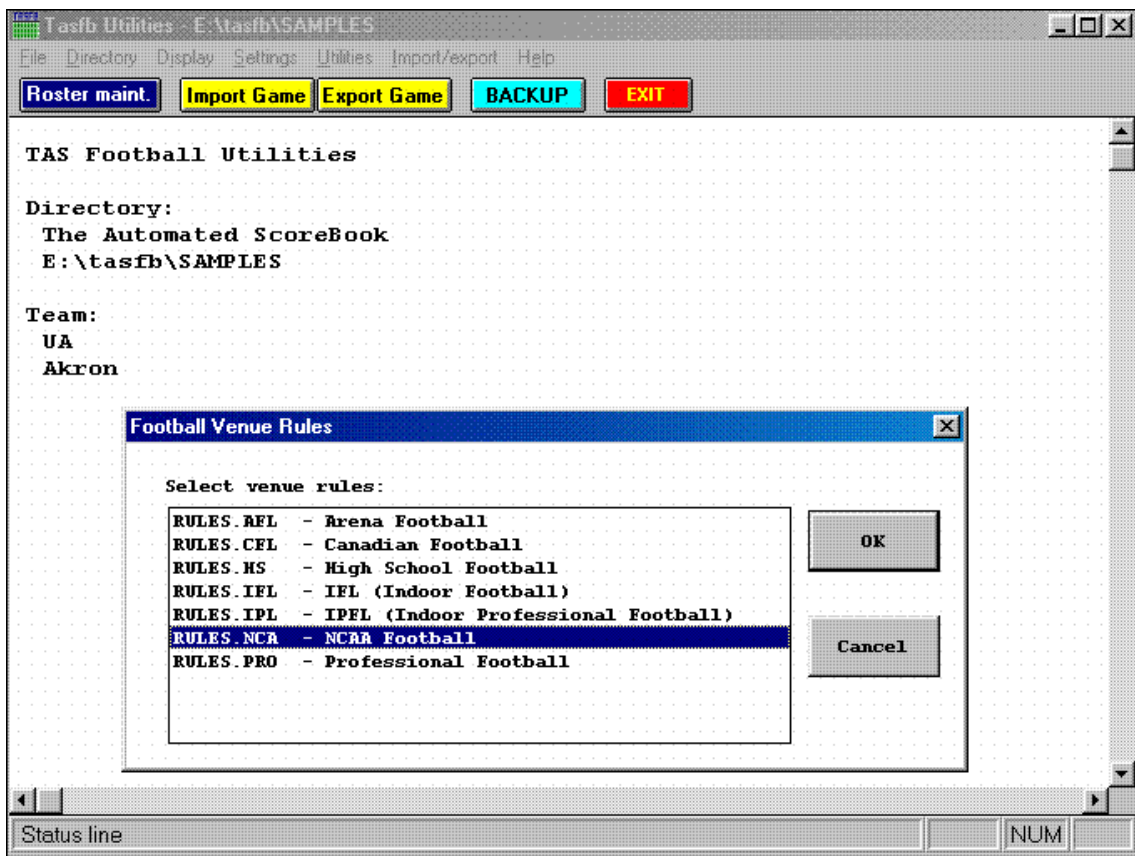
Enter stats after the game to create boxscore.

Key in team stats, 3<sup>rd</sup> and 4<sup>th</sup> down conversions, time of possessions, penalties, red zone stats.



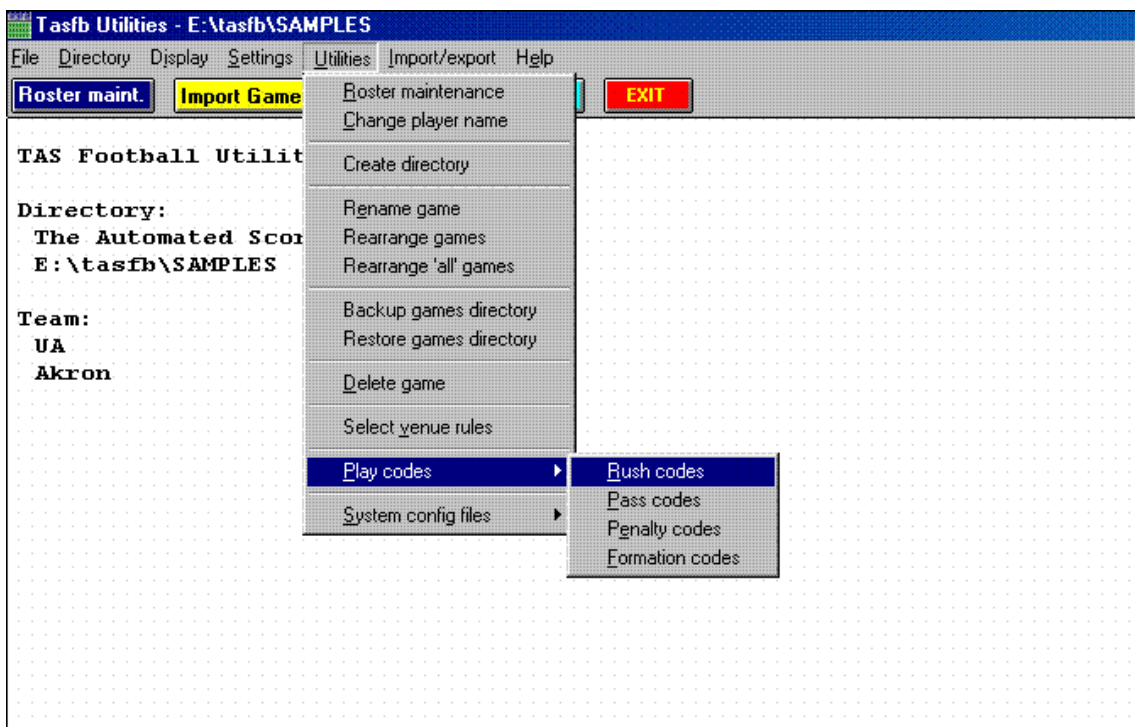
### Manual Entry -Player

Key in player stats for both teams in rushing, passing, receiving, fumbles, returns, kicking, extra points, defense.



## Utilities

Select venue rules for various leagues. Includes field length, clock information, enforcing ball spots, scoring rules, various rules for fumbles and defensive stats

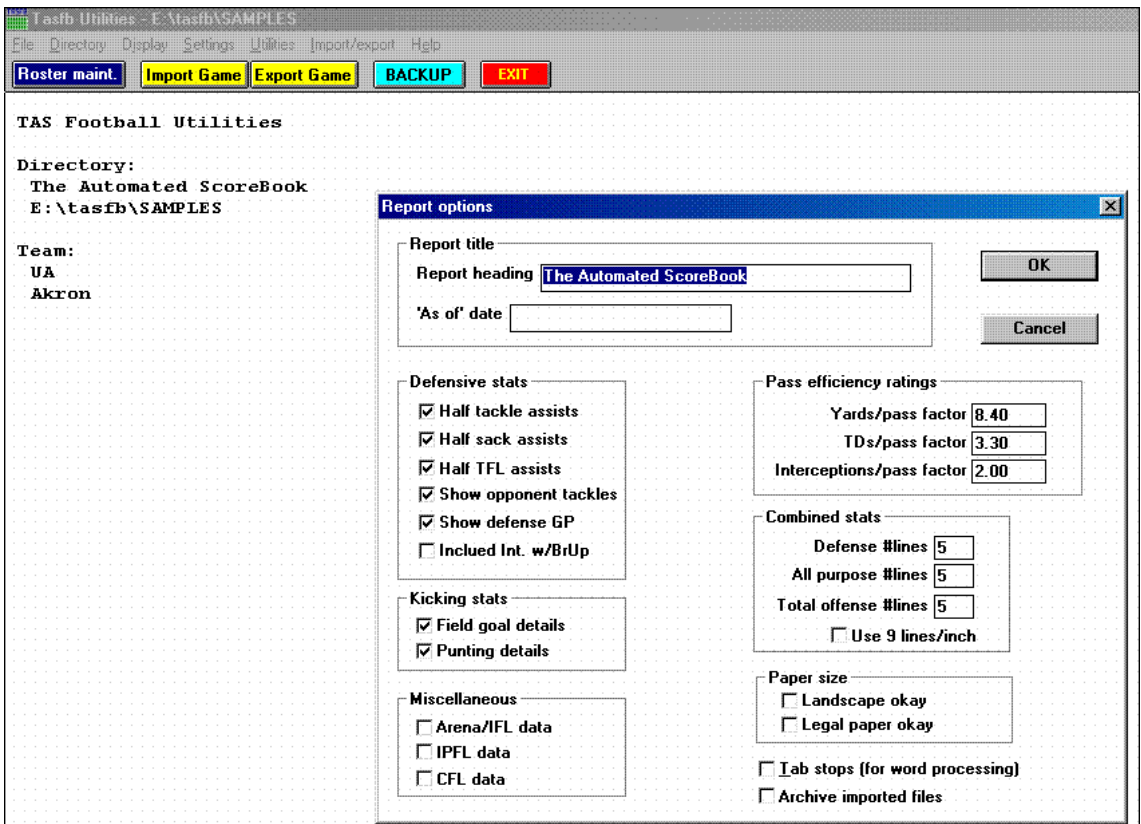


## Utilities

Setup directories for each season.

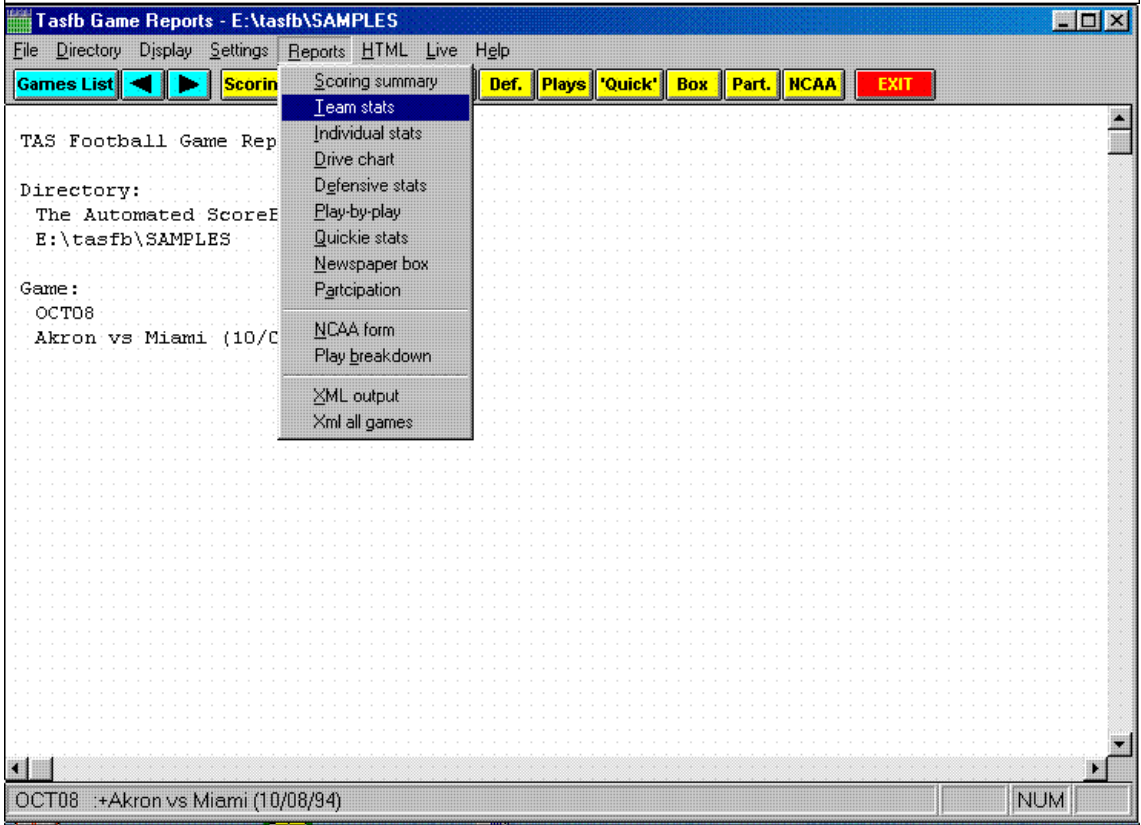
Import/export games and rosters.

Make changes to rosters.



### Utilities

Setup report options, including how defensive stats will display in reports, options to display details on some categories, paper size, tab stops options.



### Game Reports

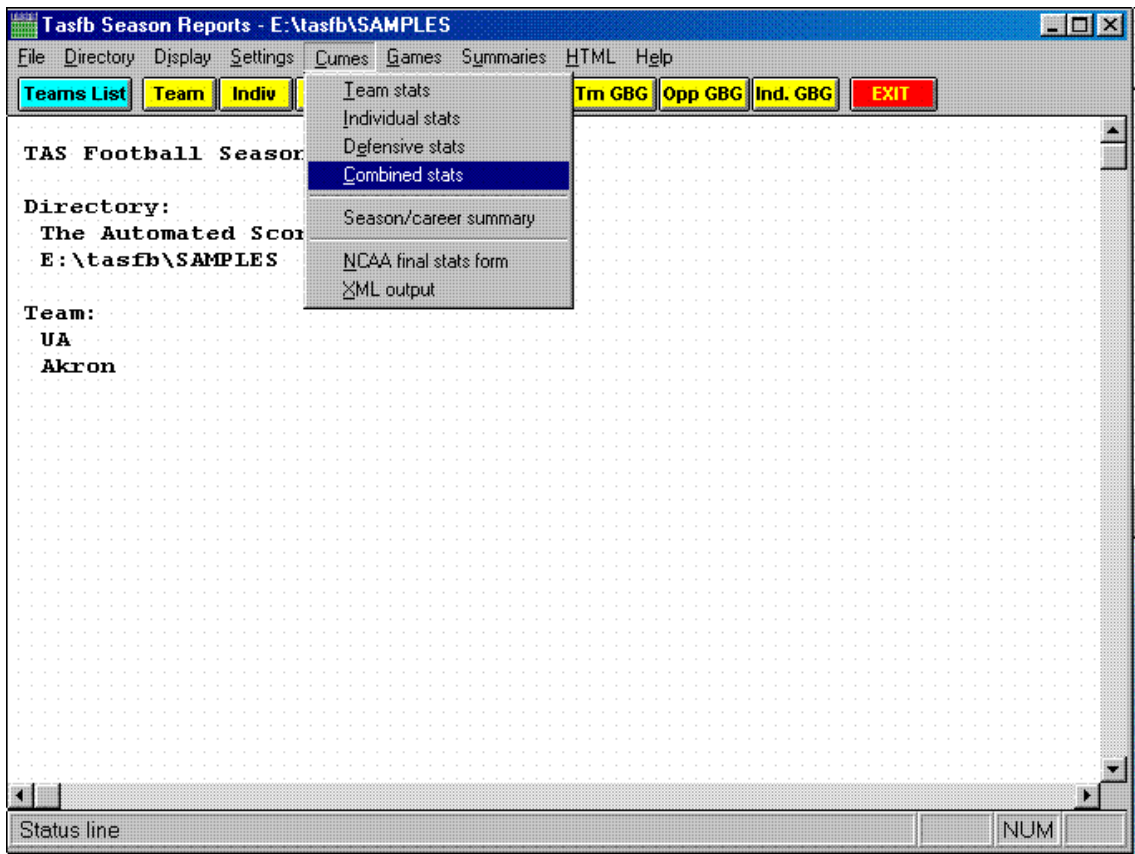
Auto-display and print report set for quick distribution during the game.

Print cumulative thru a quarter, or only for selected quarter.

Print to PDF, fax or to file.

Generate HTML boxscores.

Generate XML for NCAA reporting.

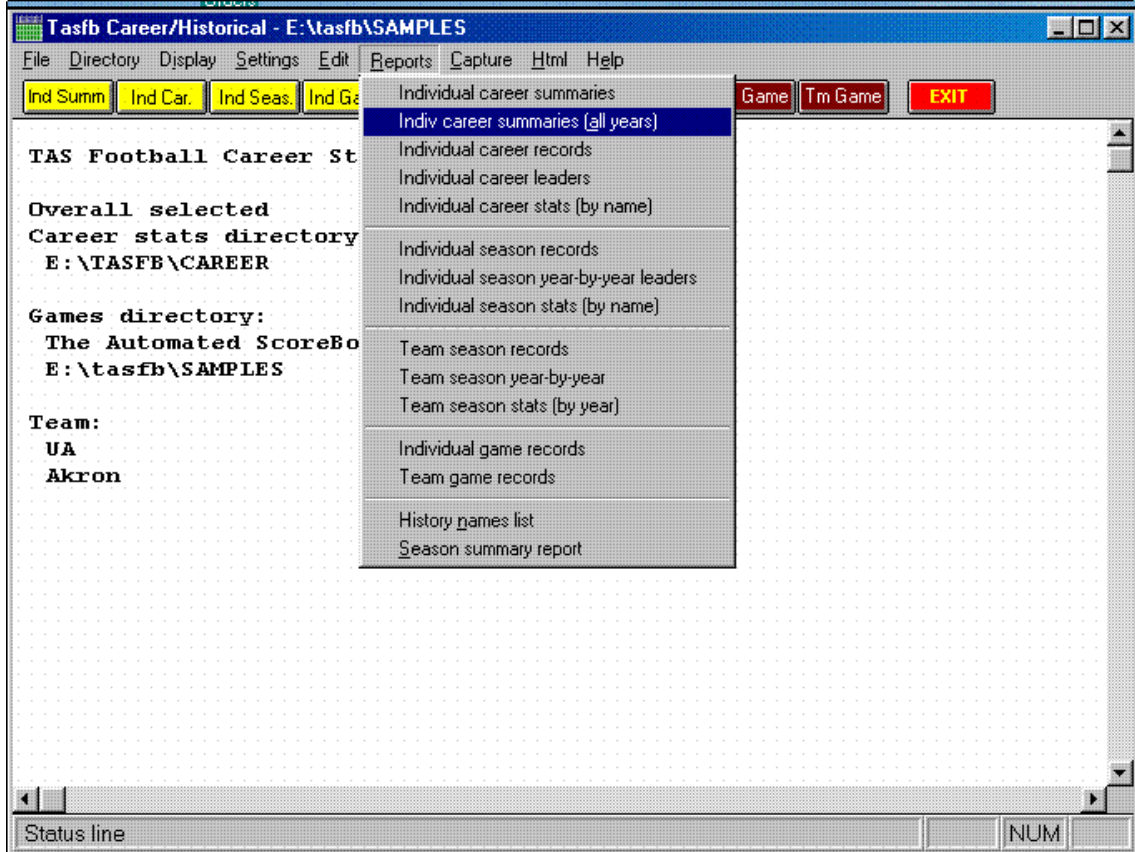


## Season Reports

Game-by-game breakdowns, summary reports, superlatives, red-zone stats and by quarter stats.

XML for NCAA reporting.

Generate HTML files for season stats.



## Career Reports

Manually enter previous season totals and records, or “capture” from past season files.

Capture overall, conference-only, and vs specific opponent.

Generate HTML files for career stats.