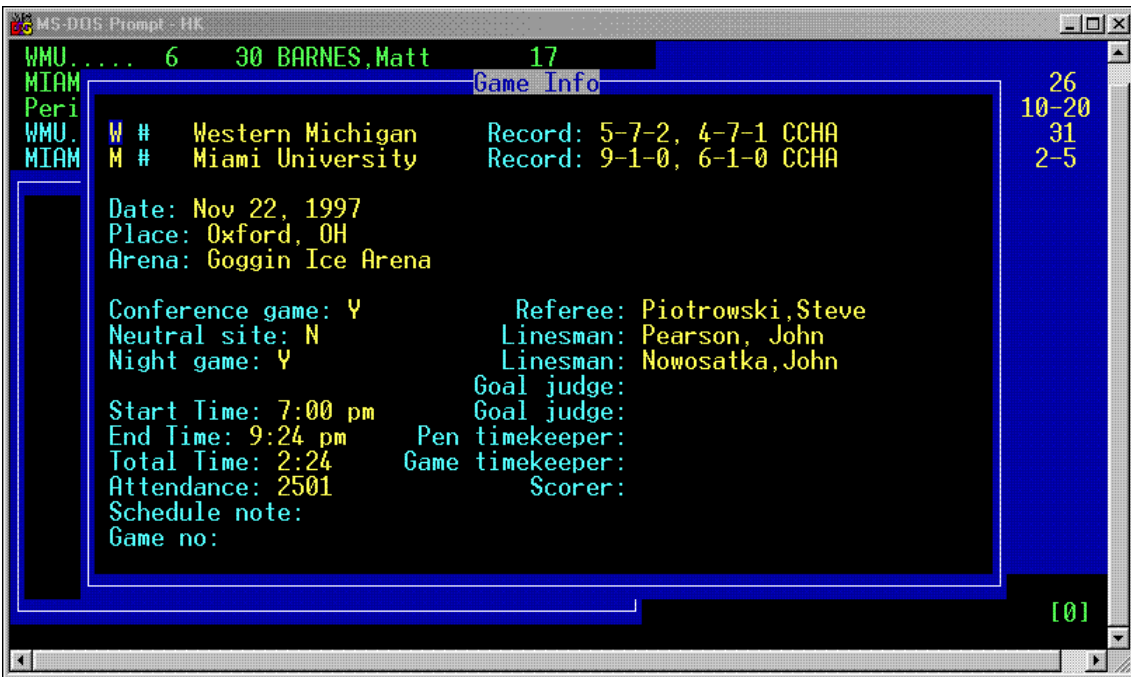


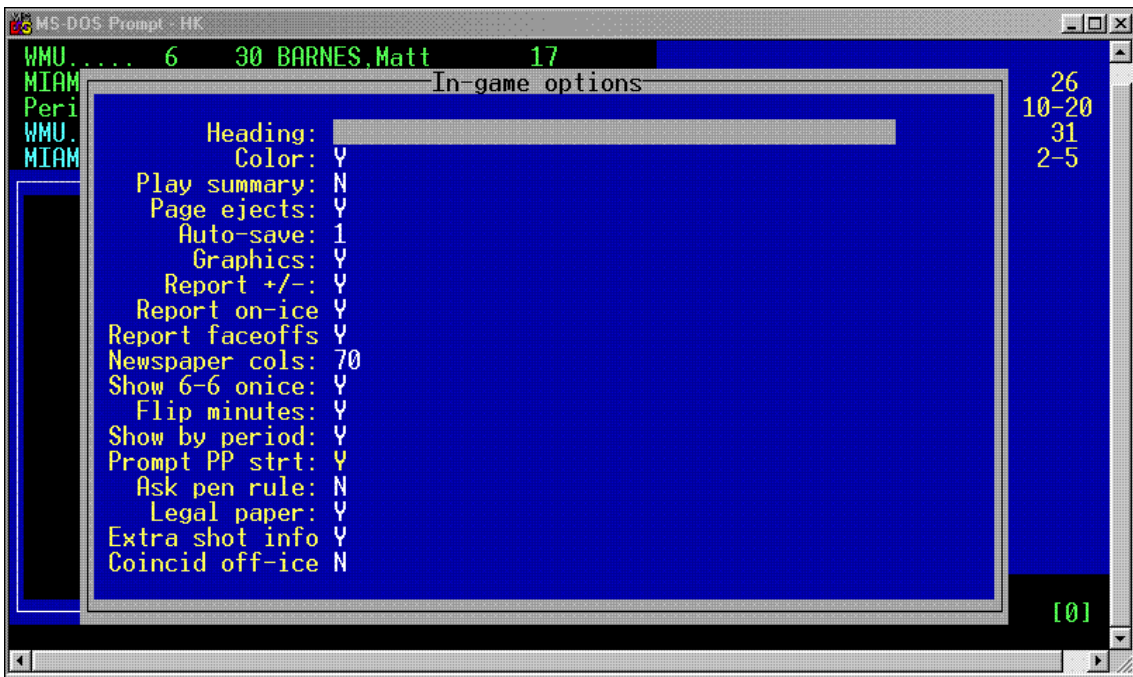
### Rules Setup

Set options for penalty minutes, periods and overtime, and shootouts according to various venue rules.



### Game Information

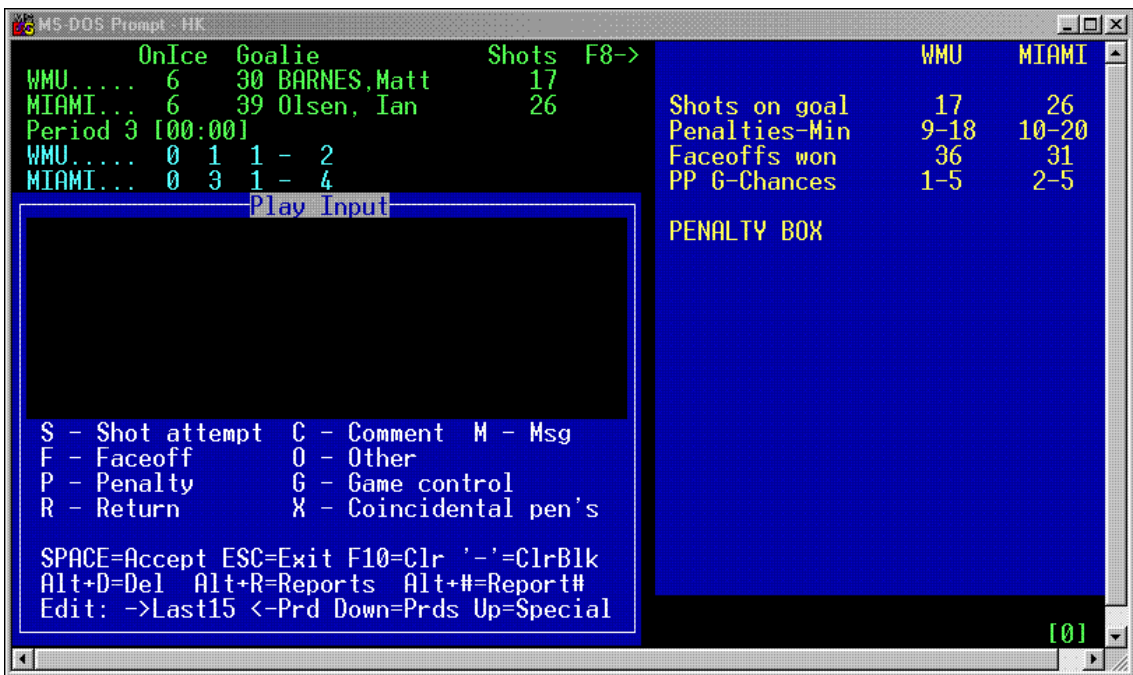
Input game day data, and finalize the boxscore with team records, attendance.



### In-game Options

Set options for on-ice counts, whether coincidental penalties go off-ice, and whether to include goalie in on-ice counts

Choose to prompt for penalty rule, descriptive shot information, power-play start.



### Game-time Scoring

Linescore, on-ice count, and goalie information will display on scoring screen.

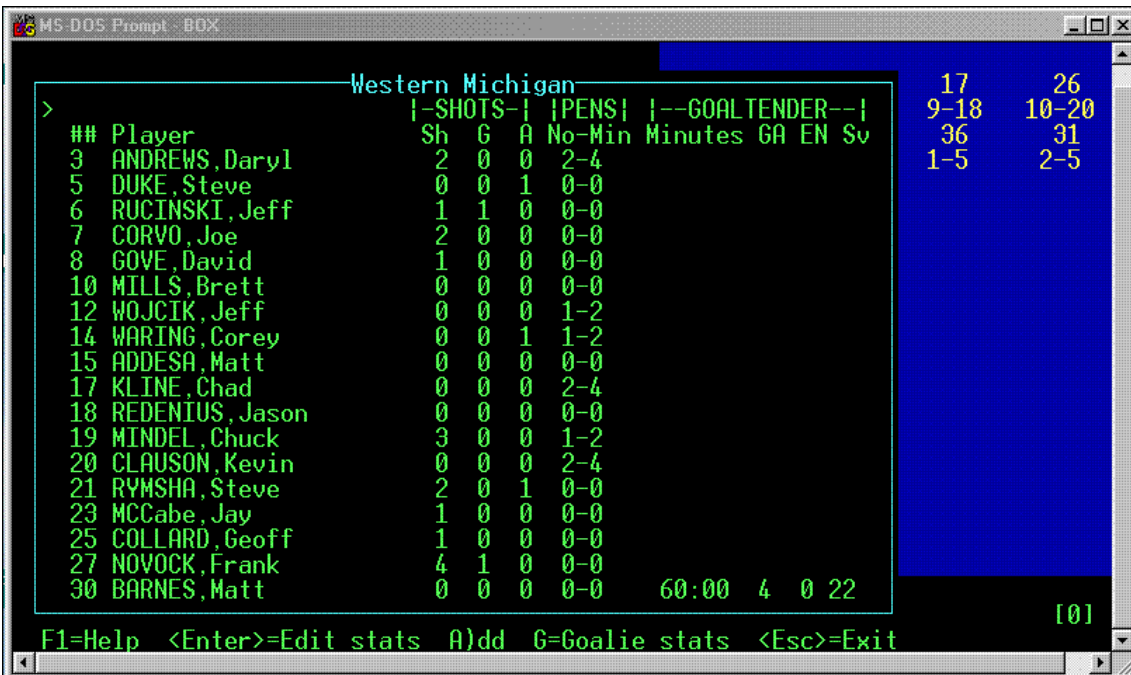
Toggle team stats and individual player stats.

Input codes and prompts will display on screen.



### Edit Plays

Select the current period, selected period, special situations of goals, penalties, returns, shots, faceoffs, power-plays, to edit, insert, replace or delete plays.

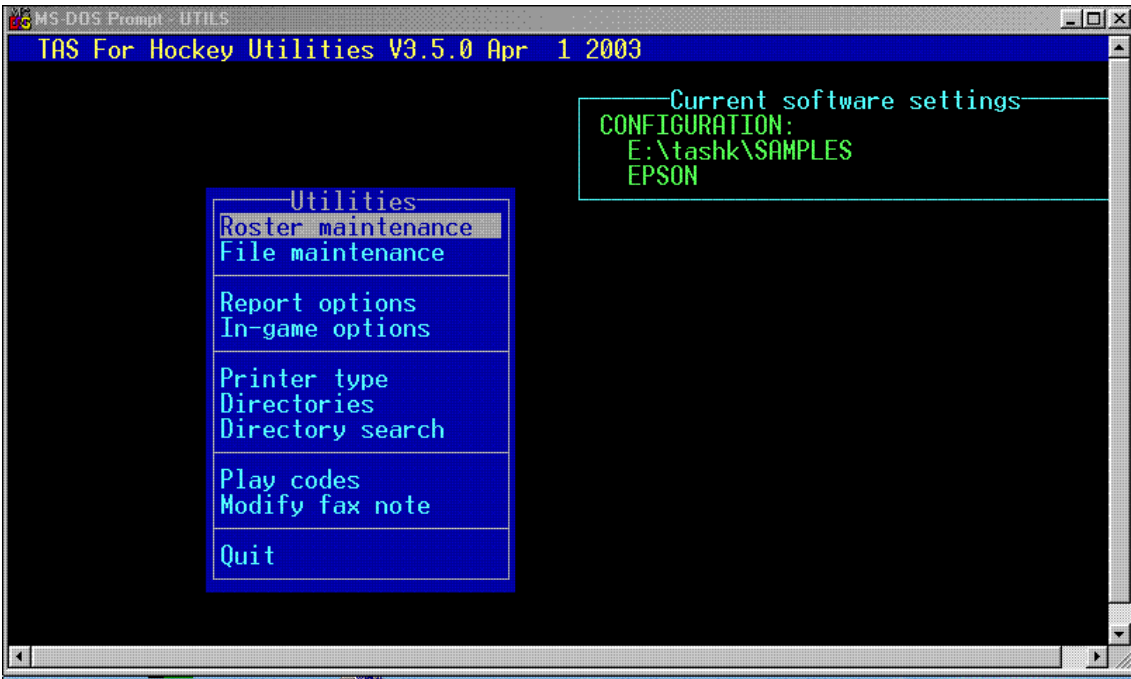


### Manual Entry

Enter stats after the game to create boxscore.

Enter team stats, linescore, goal and penalty history.

Enter player stats and minutes for both teams.

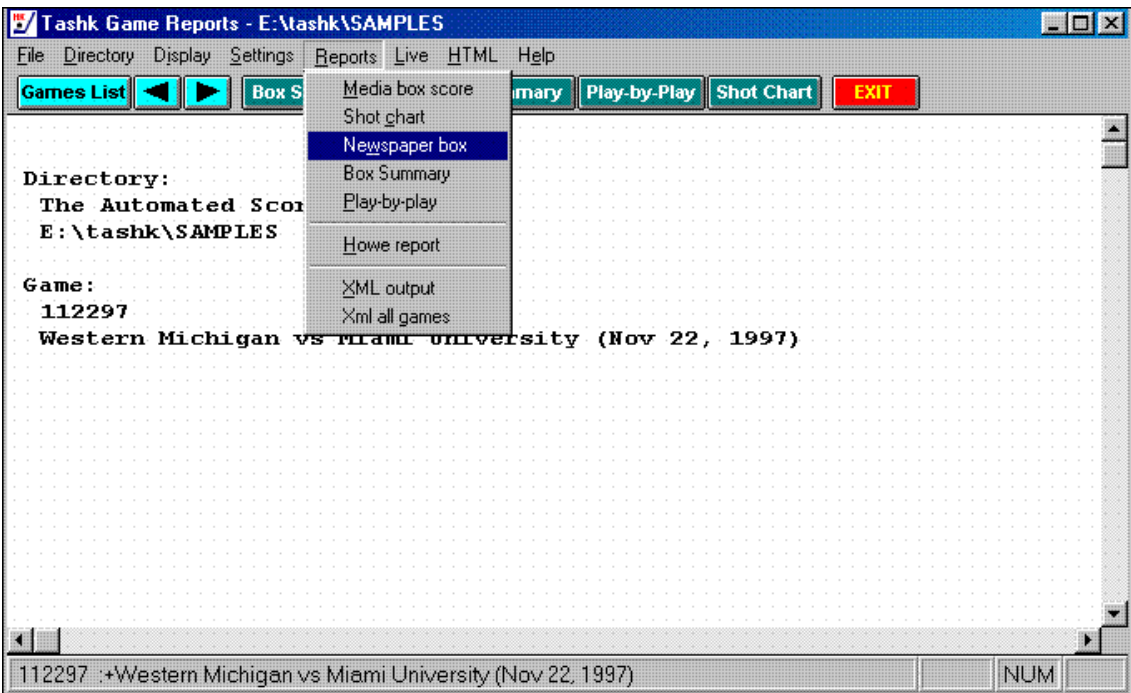


## Utilities

Setup directories for men's and women's teams.

Import/export games and rosters.

Make changes to rosters

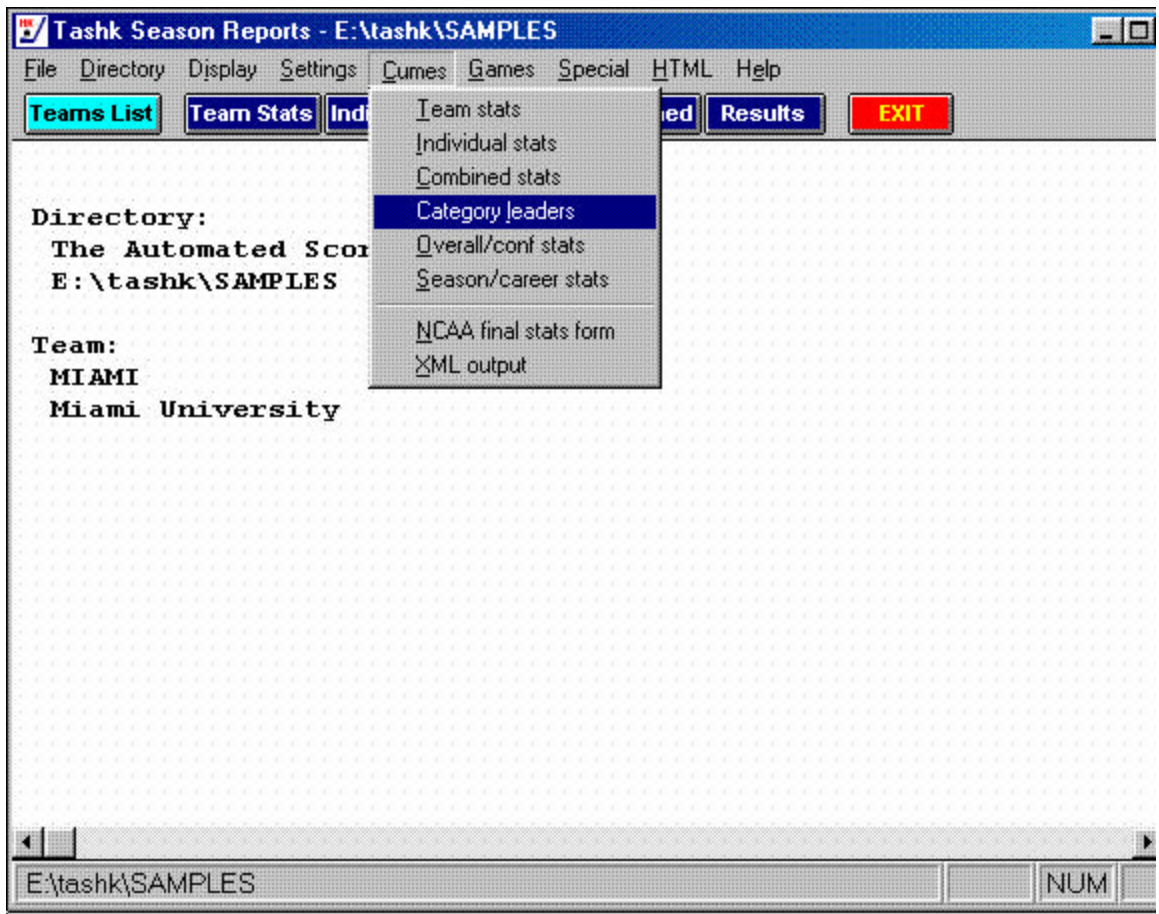


## Game Reports

Choose to display clock-time or elapsed time on reports.

Display stats for selected period or entire game.

Options to show/hide various stat categories.



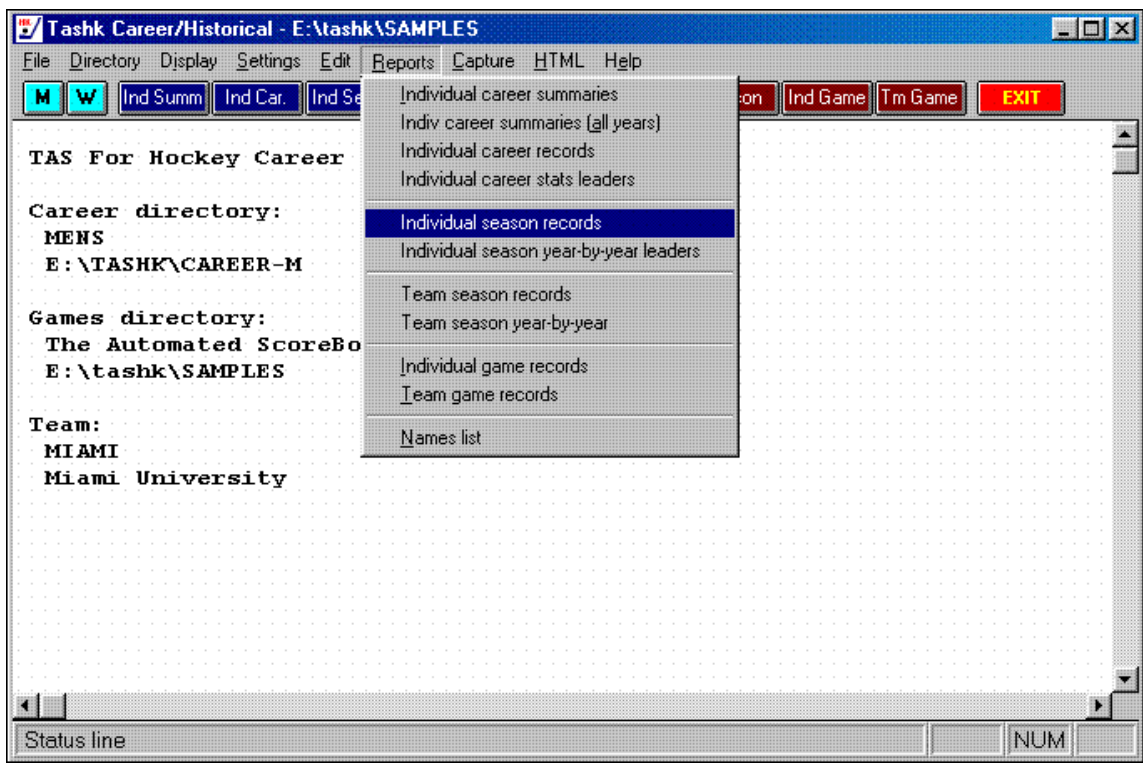
### Season Reports

Game-by-game breakdowns, summary reports, superlatives.

Choose sort criteria, several display options, tab stops in reports.

XML for NCAA reporting.

Generate HTML files for season stats.



### Career Reports

Manually enter previous season totals and records, or "capture" from past season files.

Capture overall, conference-only, and vs specific opponent.

Generate HTML files for career stats.