

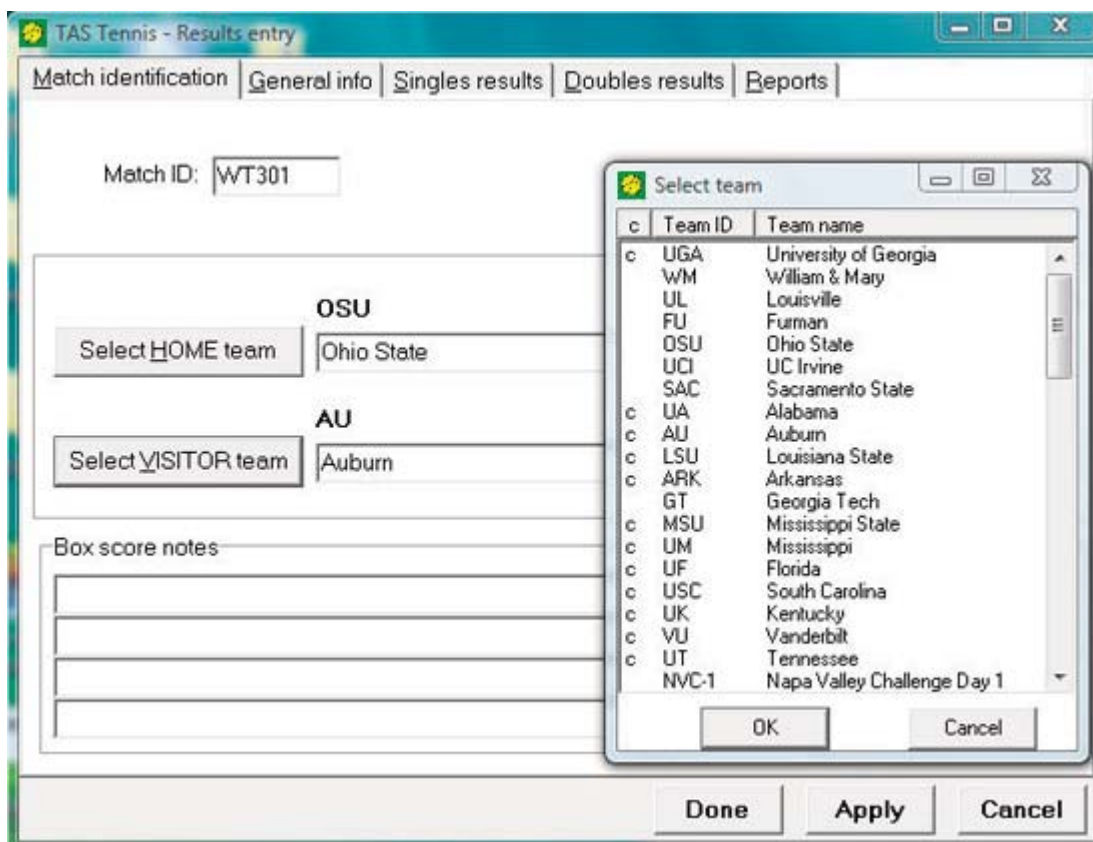
Utilities

Setup directories for men's and women's teams.

Import/export matches.

Import/export, set up and make changes to rosters.

Arrange matches.



Match setup

Name match (match ID).

Select teams prior entering singles and doubles results.

TAS Tennis - Results entry

Match identification | General info | Singles results | Doubles results | Reports

General

Date: Apr 16, 2010

Start time: 3:00

Site: Cincinnati, Ohio

Venue: Cincinnati Tennis Center

Sched note: Squash venue

Officials

1: _____

Game wrapup

Length of event: _____

Attendance: 1000

Match indicators

Conference/league
 Neutral site
 Post season
 Regional

Doubles as one decision
 Doubles = 2 points

Forfeits

No forfeit
No forfeit
Forfeit by visitors
Forfeit by home team

Suspended match (no team W-L)

Done Apply Cancel

Match setup

Allow for various venues, including neutral site, post-season, and regional events.

Allow for various scoring options, including 9 point match (6 singles, 3 doubles), 7 point match (6 singles, 2 out 3 doubles for 1 point), or individual stats only.

Designate match as forfeit.

Box score contains results for singles, doubles, match notes.

TAS Tennis - Results entry

Match identification | General info | Singles results | Doubles results | Reports

#	Ohio State		SINGLES 1	Players	1	2	3	4	5	>>>	
01	Joey Atas	Edit	Joey Atas	2	2						
02	Drew Eberly	Insert	Bernardo Bachino	6	6						
03	Scott Green	Delete	2	Players	1	2	3	4	5	>>>	
04	Chris Klingemann	Get lineup	Drew Eberly	2	4						
05	Dennis Mertens		Tom George	6	6						
06	Devin Mullings		SINGLES 3	Players	1	2	3	4	5	>>>	
07	Dominic O'Connell		OSU	Scott Green	2	6	4				
08	Ross Wilson		AU	Brent Goedjen	6	3	6				
Notes: In score-by-set use. wf = won by forfeit wd = won by default ww = won by walkover wr = won by retirement uf = unfinished											
#	Auburn		SINGLES 4	Players	1	2	3	4	5	>>>	
01	Bernardo Bachino		OSU	Chris Klingemann	3	3					
02	Tom George		AU	Brett Hunter	6	6					
03	Brent Goedjen		SINGLES 5	Players	1	2	3	4	5	>>>	
04	Brett Hunter		OSU	Dennis Mertens	4	1					
05	Robbert Lathouwers		AU	Robbert Lathouwers	6	6					
06	Nick Lane		SINGLES 6	Players	1	2	3	4	5	>>>	
07	Gabor Zoltan Pelva		OSU	Devin Mullings	2	5					
08	Alex Schweizer		AU	Nick Lane	6	7					

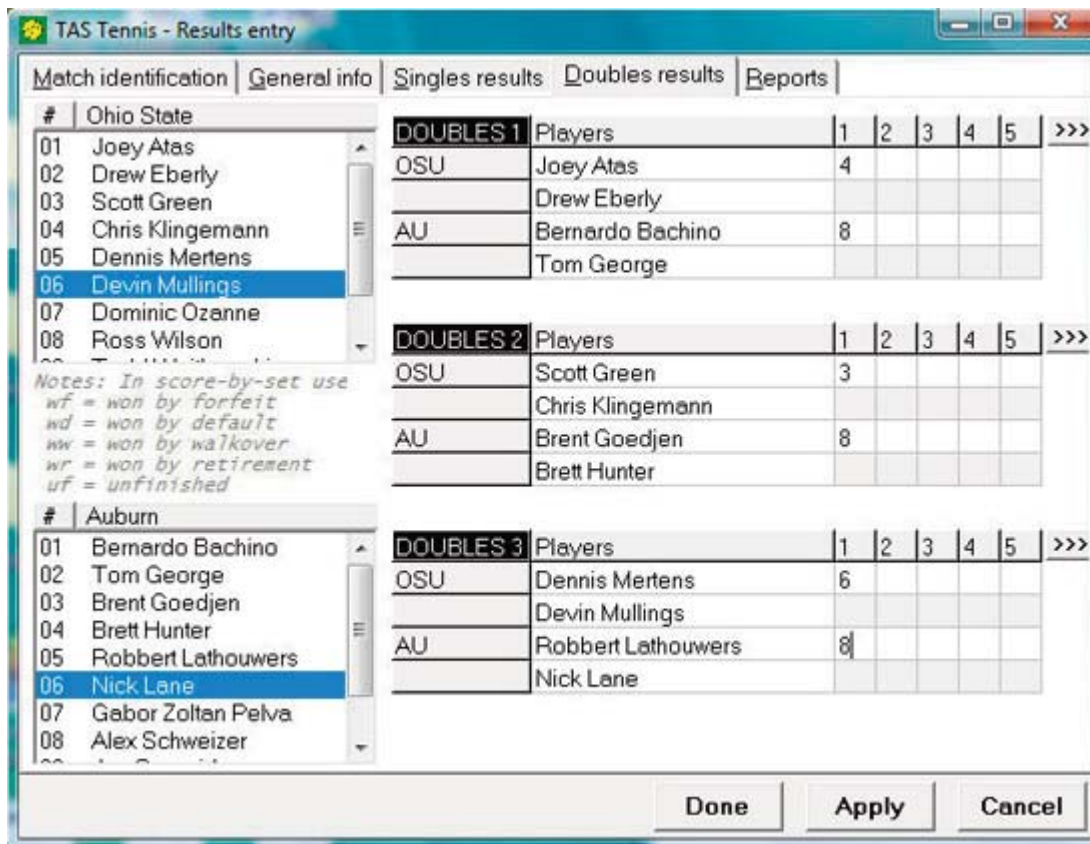
Done Apply Cancel

Singles Results Entry

Enter lineups by keying in uni number, name, click and drag, or "get lineup" feature from master roster.

Edit, insert, delete from roster during setup.

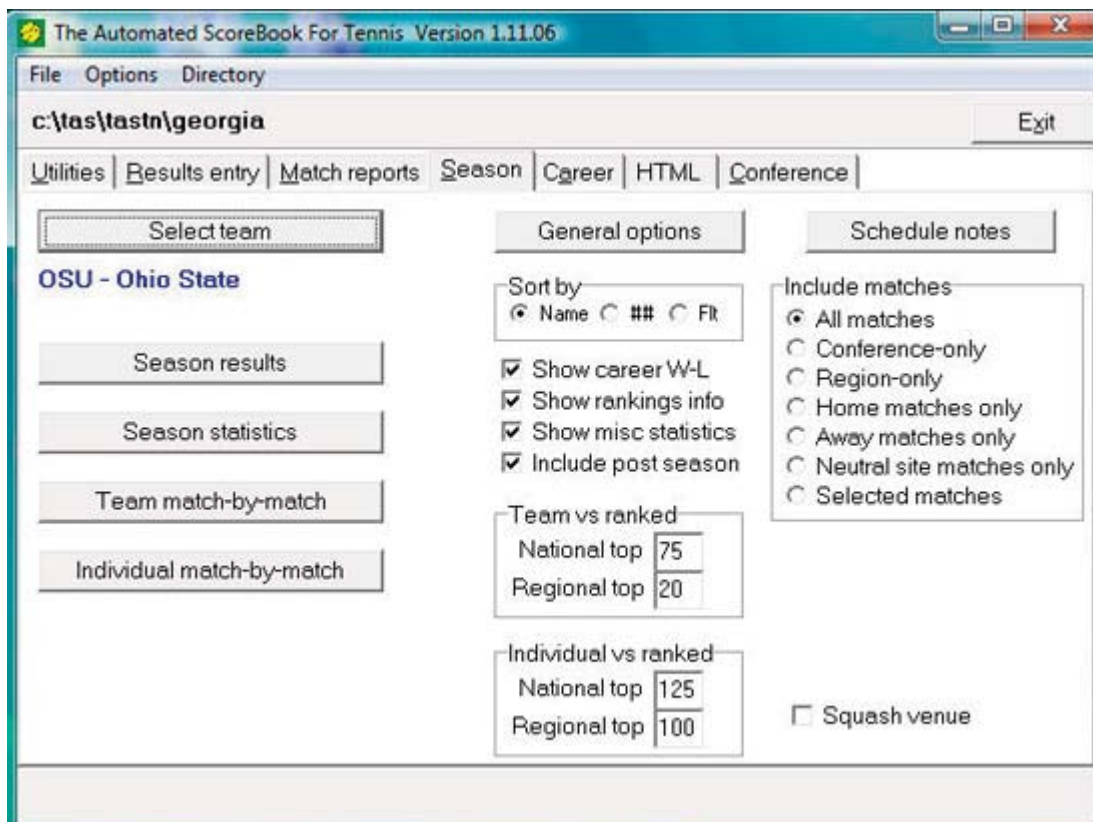
Input notes for forfeit, default, walkover, retirement, or unfinished matches.



Doubles Results Entry

Enter lineups by keying in uni number, name, or click and drag, .

Input notes for forfeit, default, walkover, retirement, or unfinished matches.



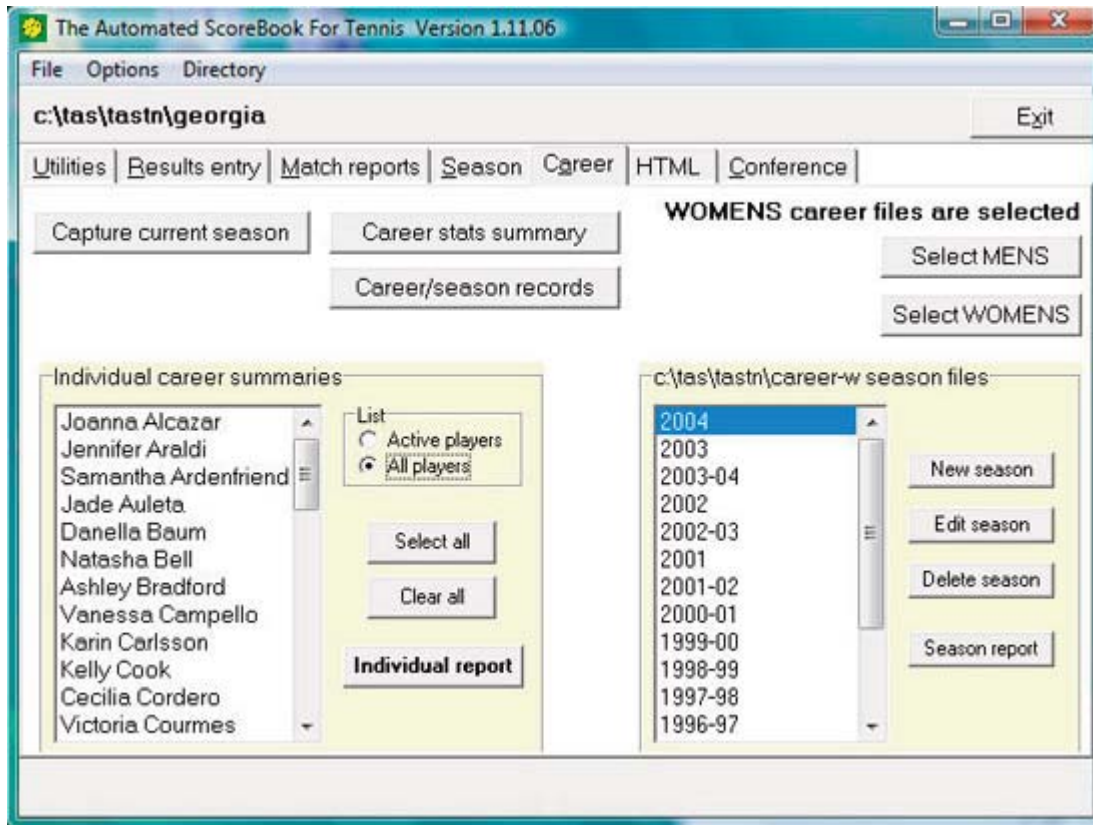
Season Reports

Generate reports for results, season stats, match-by-match for team and individual players.

Sort by name, uniform number, or flight.

Options to show career win-loss, show rankings info, show miscellaneous stats, and/or include post-season.

Show team and individual results versus ranked opponents.



Career Reports

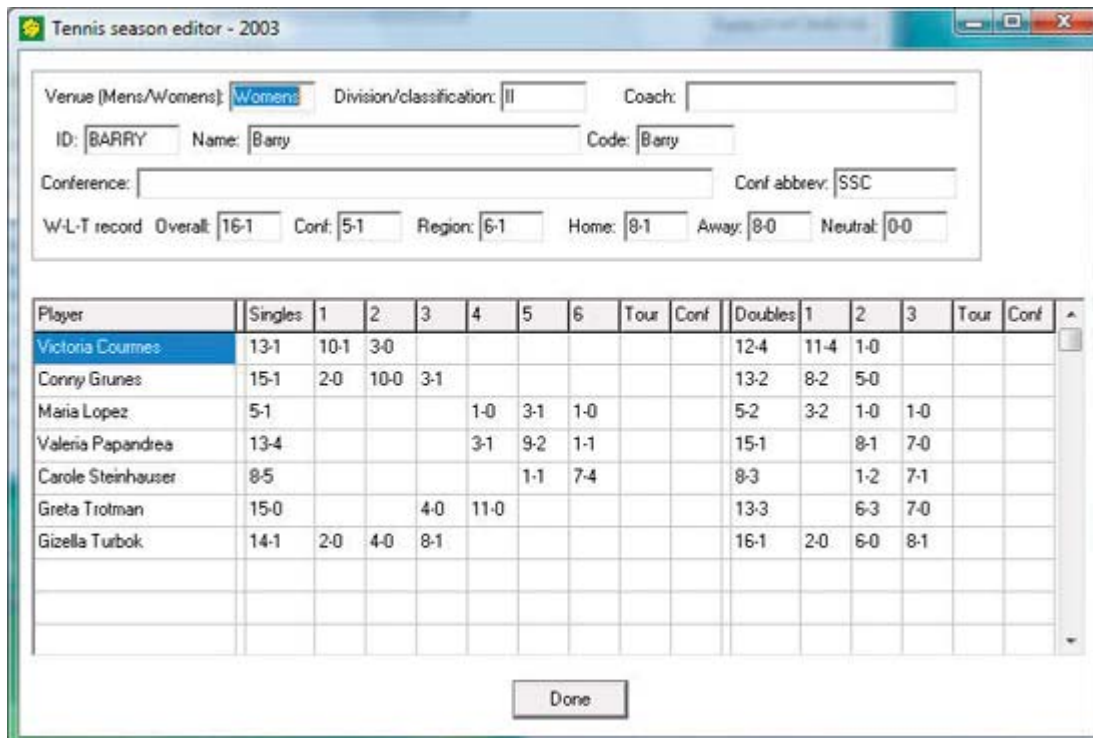
Maintain separate men's and women's directories.

"Capture" function automatically creates season file for current players.

Set up career/season records report options and generate career and season records reports.

Create, edit, or delete seasons.

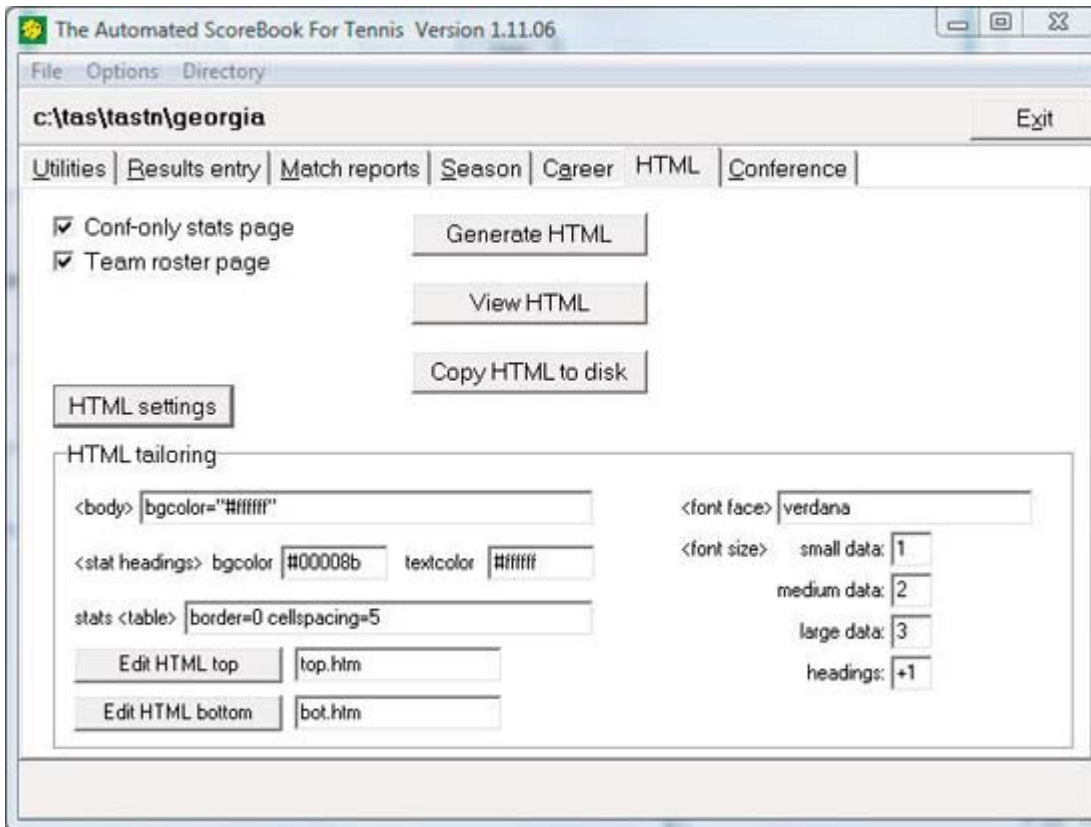
Choose players to include in reports.



Season/Career Editor

Add, delete or edit previous seasons.

Manually enter past season results for team and individuals



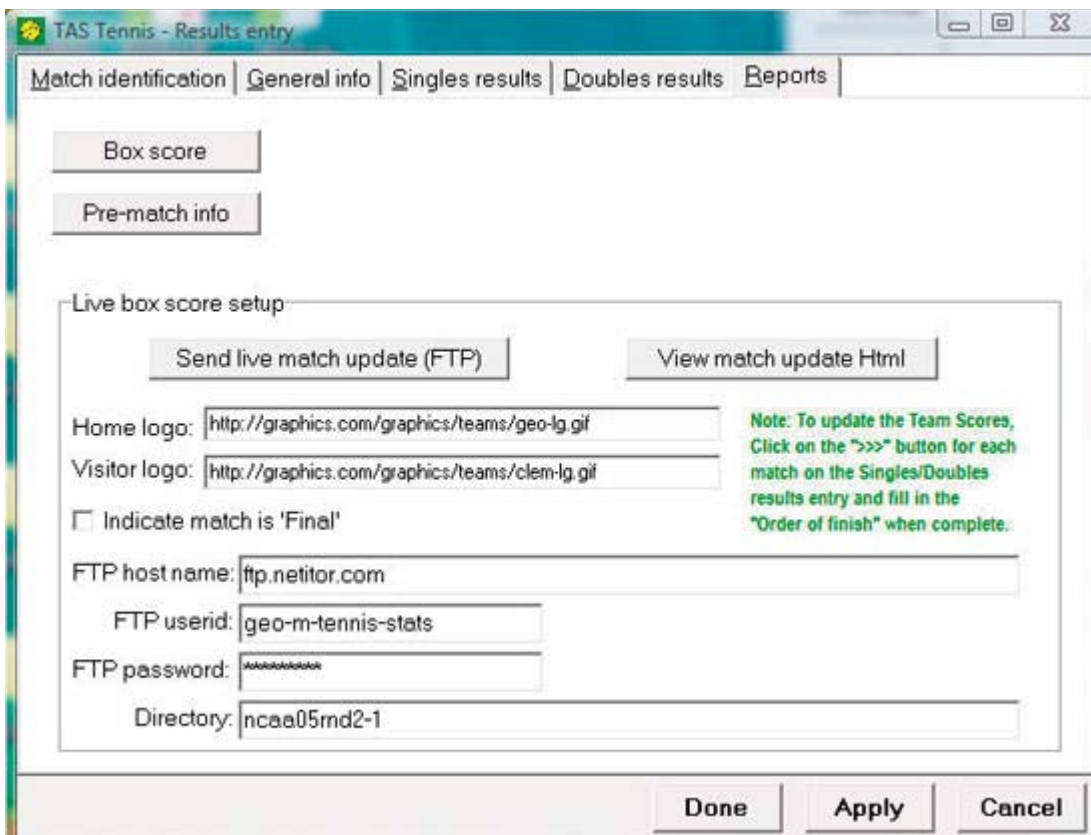
HTML Settings

Create stats page for your website.

Select the fonts, color, etc., that you want to use for your page.

Select "Generate HTML" to create the pages.

Select "View HTML" to preview your pages.



Live Stats Settings

Choose logos for your live stats page and type their locations in the "home logo" and "visitor logo" lines.

Fill in the settings information for your website and select "send live match update (FTP)" to send the stats to your site.