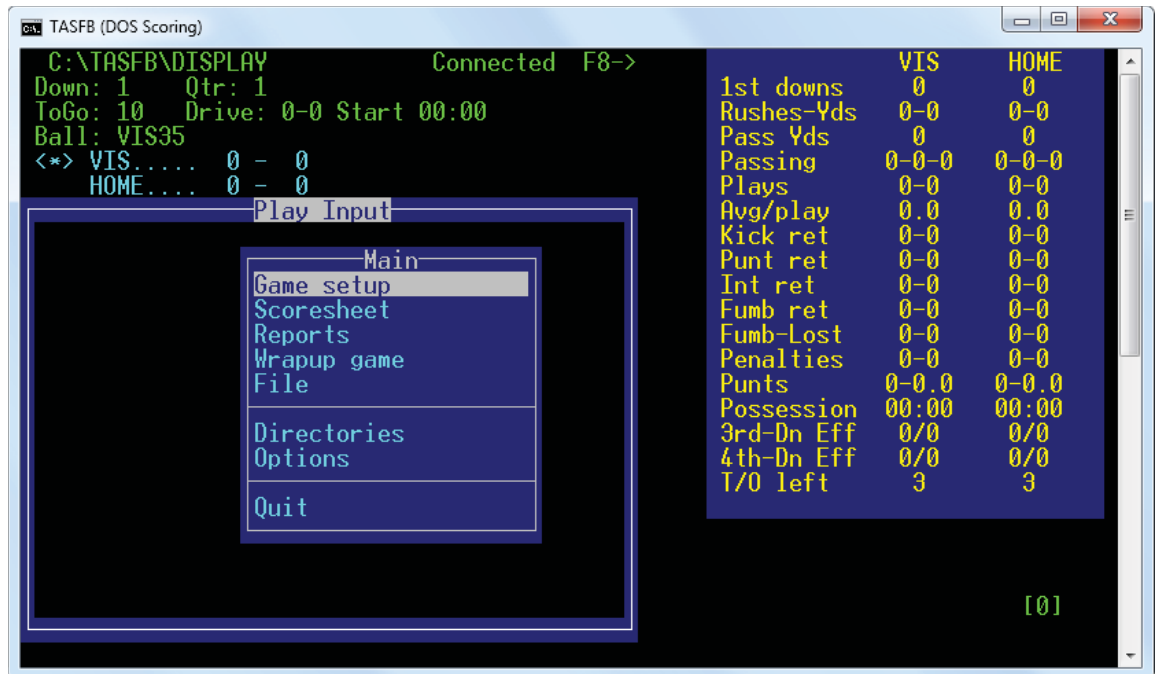


## The Automated ScoreBook for Football™

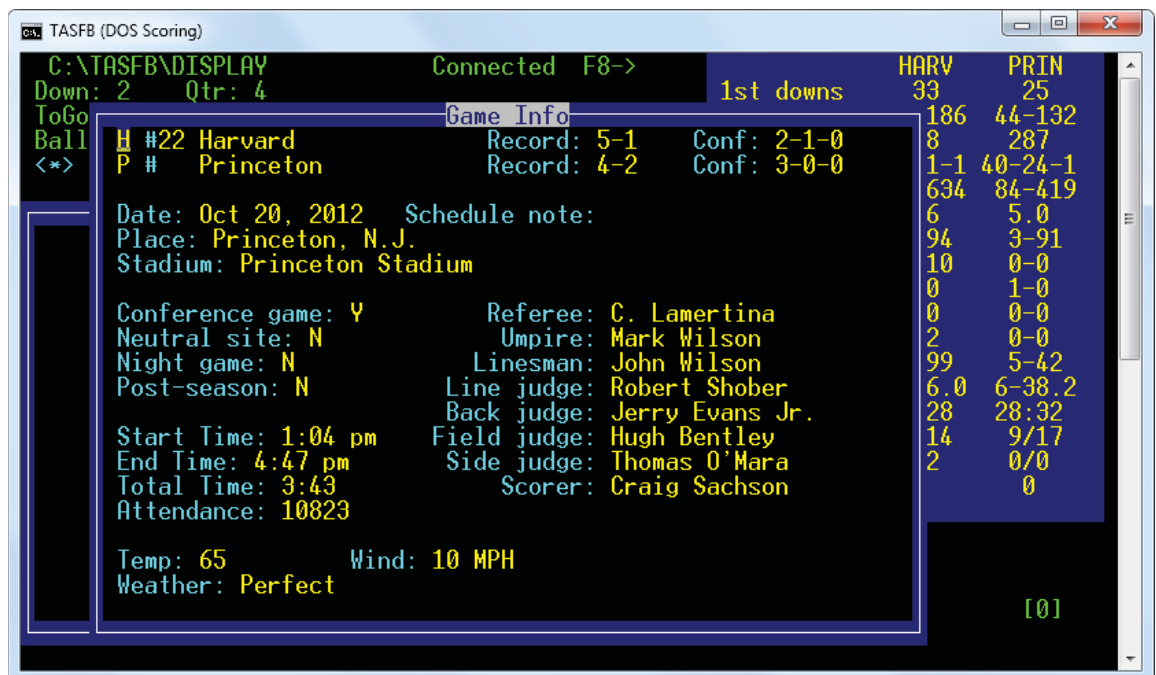
### • Game Setup

Set up teams, starters, rules, make changes to rosters.



### • Game Information

Input game day data, and finalize the boxscore with team records, and attendance.

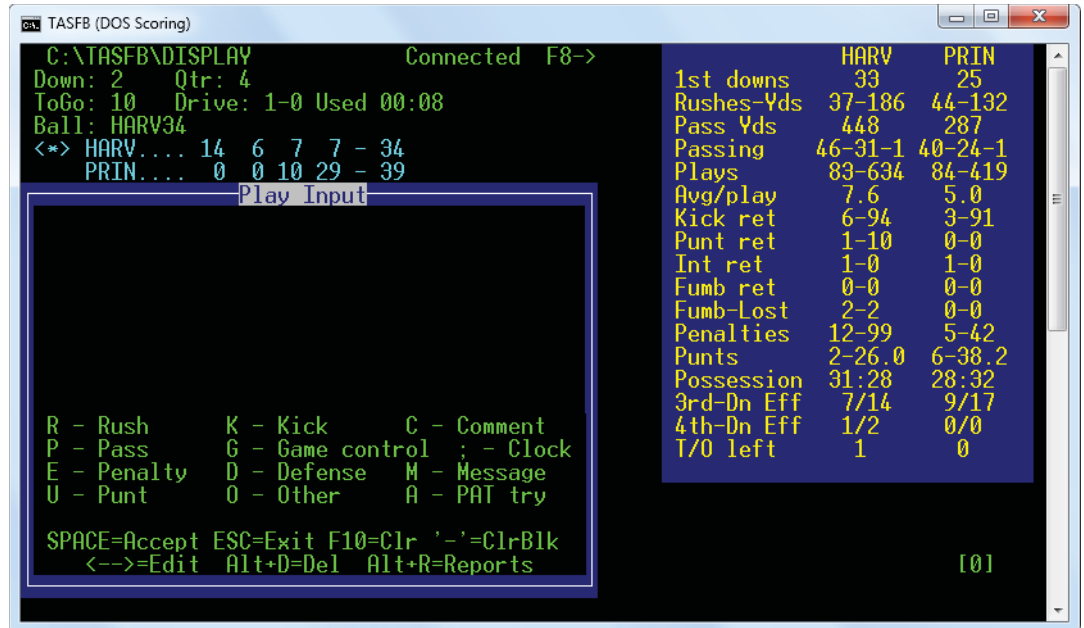


# STATCREW SOFTWARE

## • Input plays

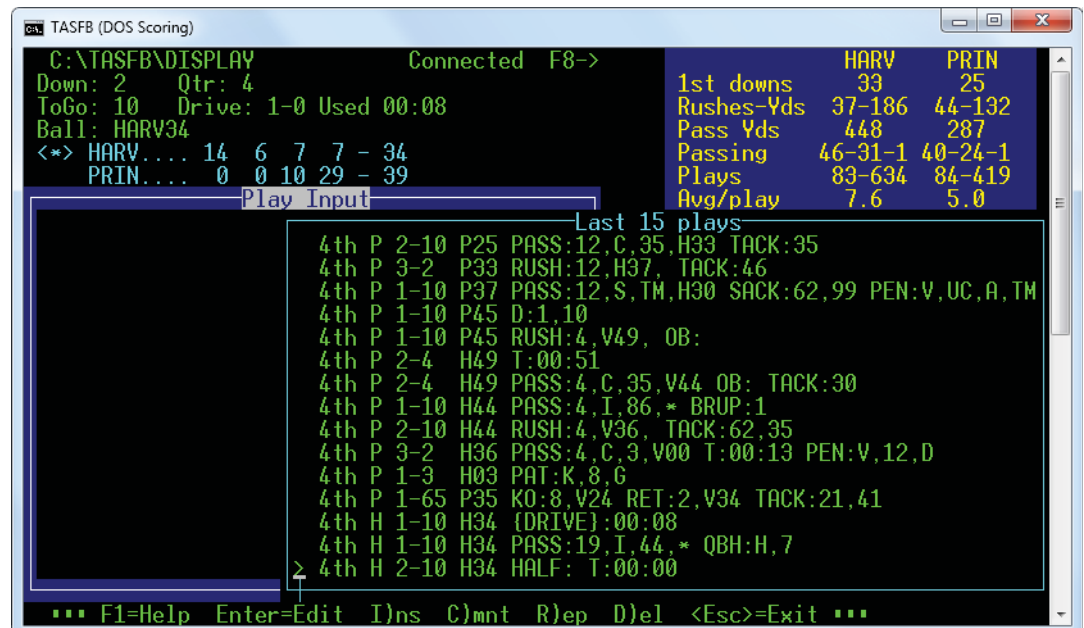
Input screen will display current drive information, linescore and team statistics.

Input codes display on the screen as the game is scored.



## • Edit Plays

Select the drive, or select the last 15 plays, or select quarter to edit, insert, replace or delete plays.

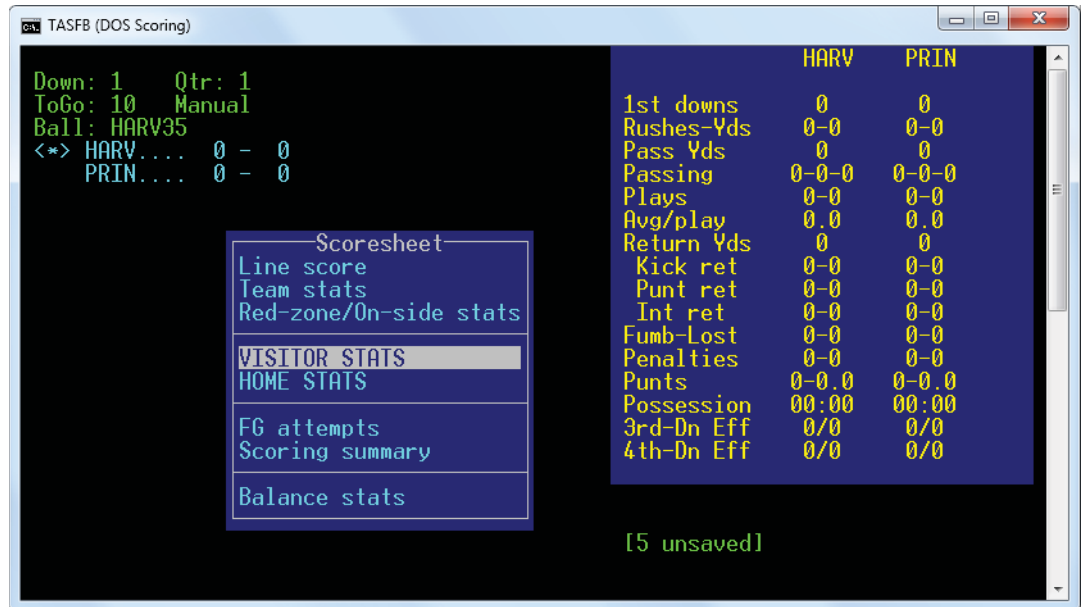


# STATCREW SOFTWARE

## • Manual Entry (Team)

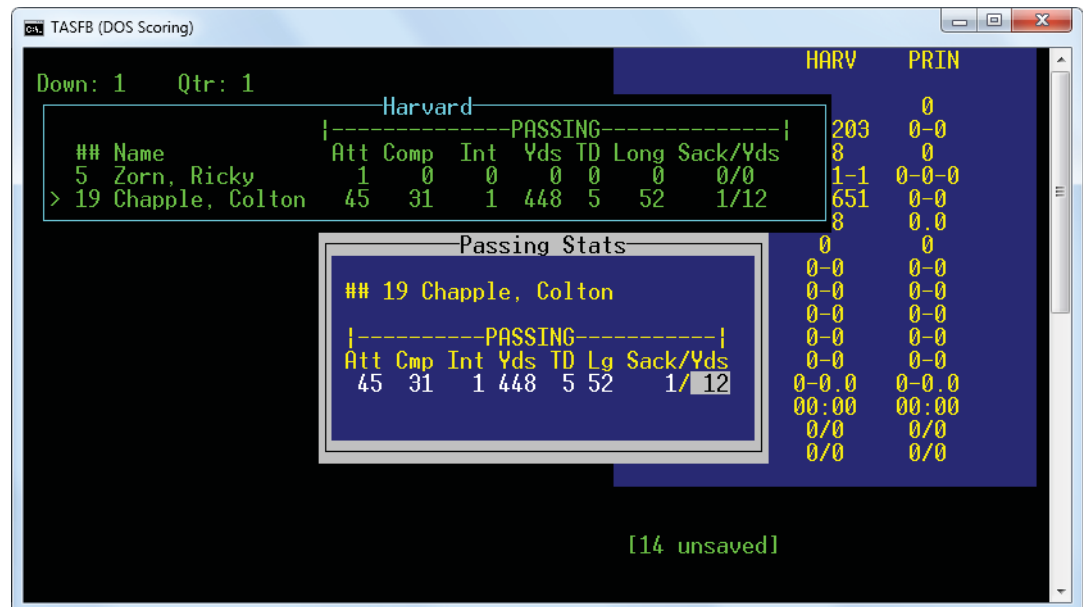
Enter stats after the game to create boxscore.

Key in team stats, third and fourth down conversions, time of possessions, penalties, red zone stats.



## • Manual Entry (Player)

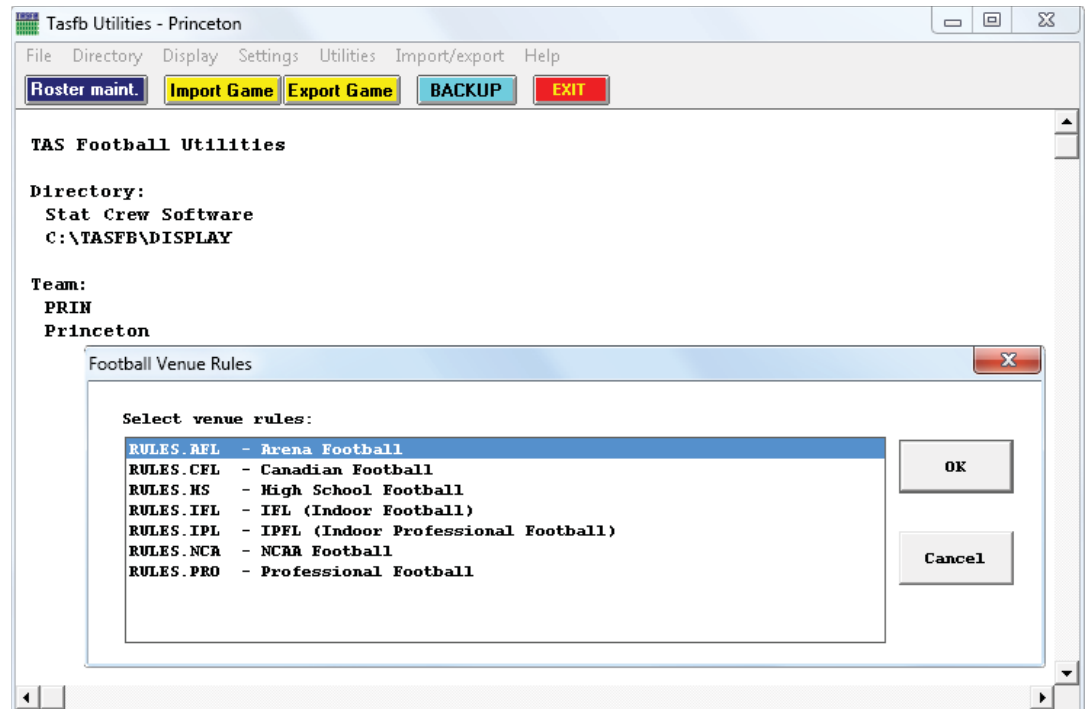
Key in player stats for both teams in rushing, passing, receiving, fumbles, returns, kicking, extra points, and defense.



## • Utilities

Select venue rules for various leagues.

Include field length, clock information, enforcing ball spots, scoring rules, various rules for fumbles and defensive stats.



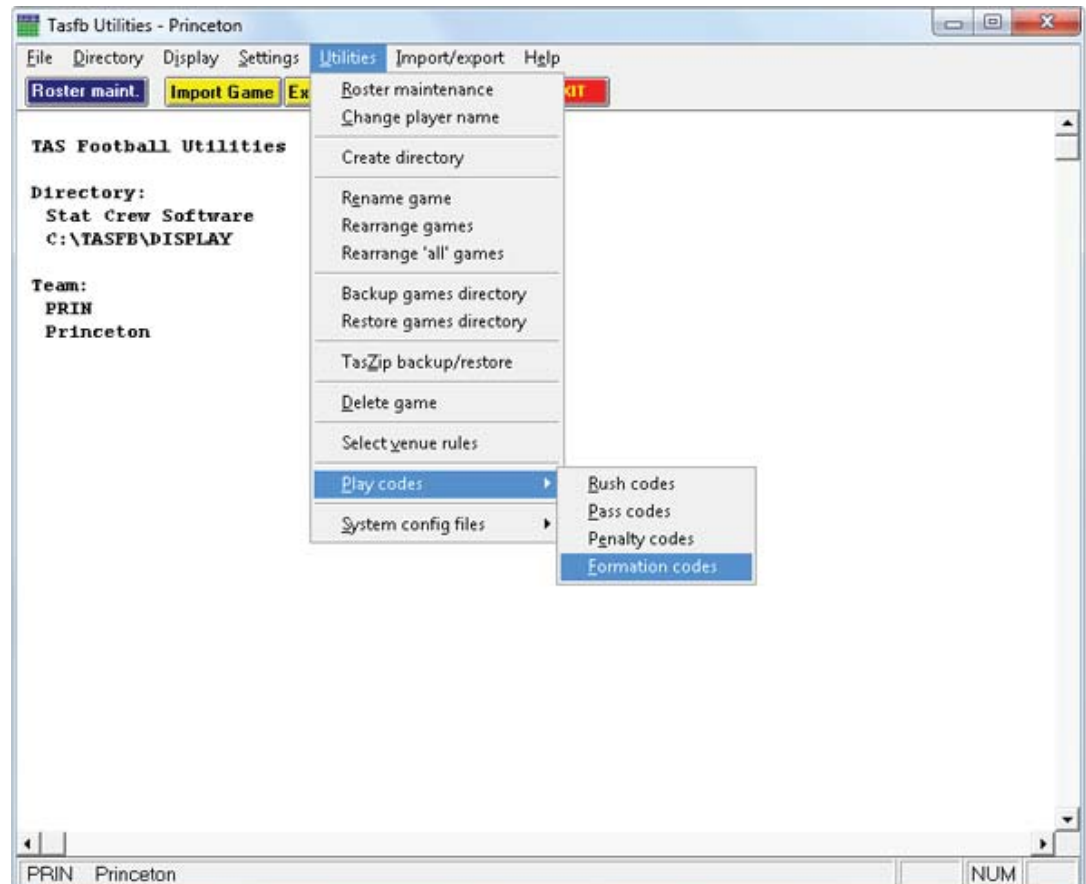
## • Utilities

Set up directories for each season.

Import/export games and rosters.

Make changes to rosters.

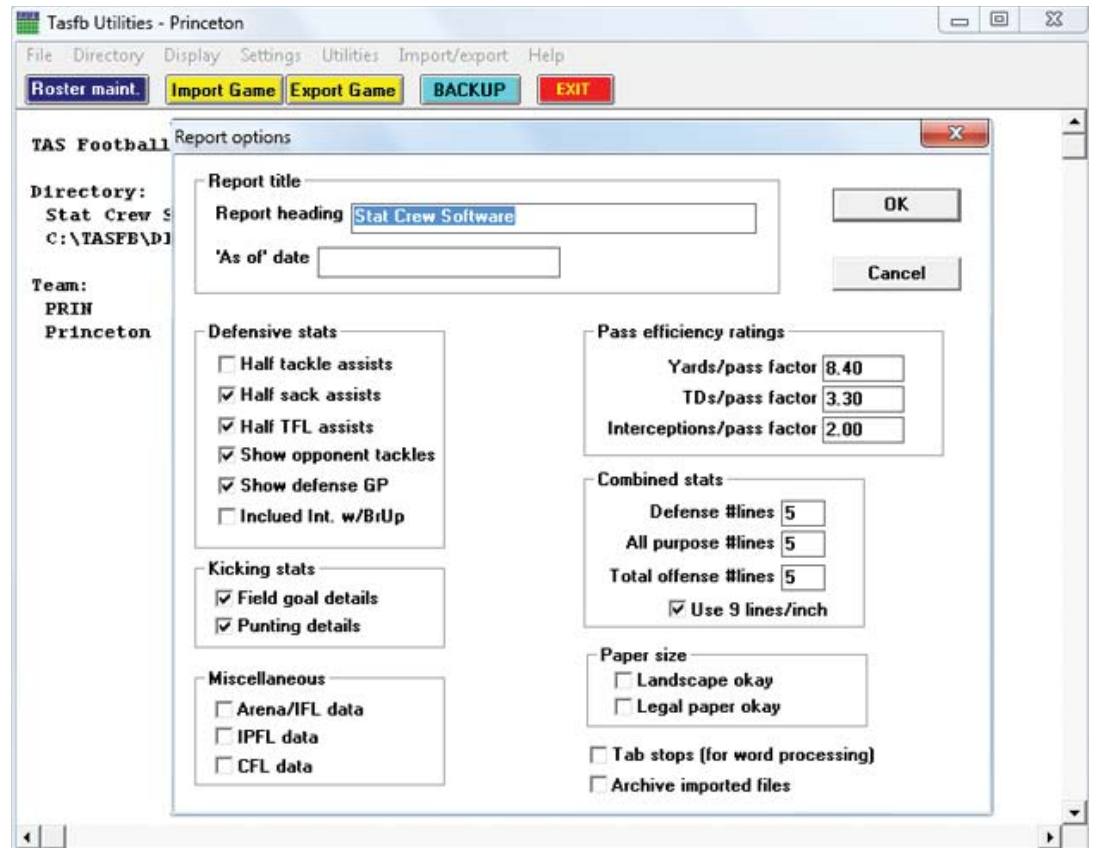
Edit play codes.



# STATCREW SOFTWARE

## • Utilities

Set up report options, including how defensive stats will display in reports, options to display details on some categories, paper size, tab stops option.



## • Game Reports

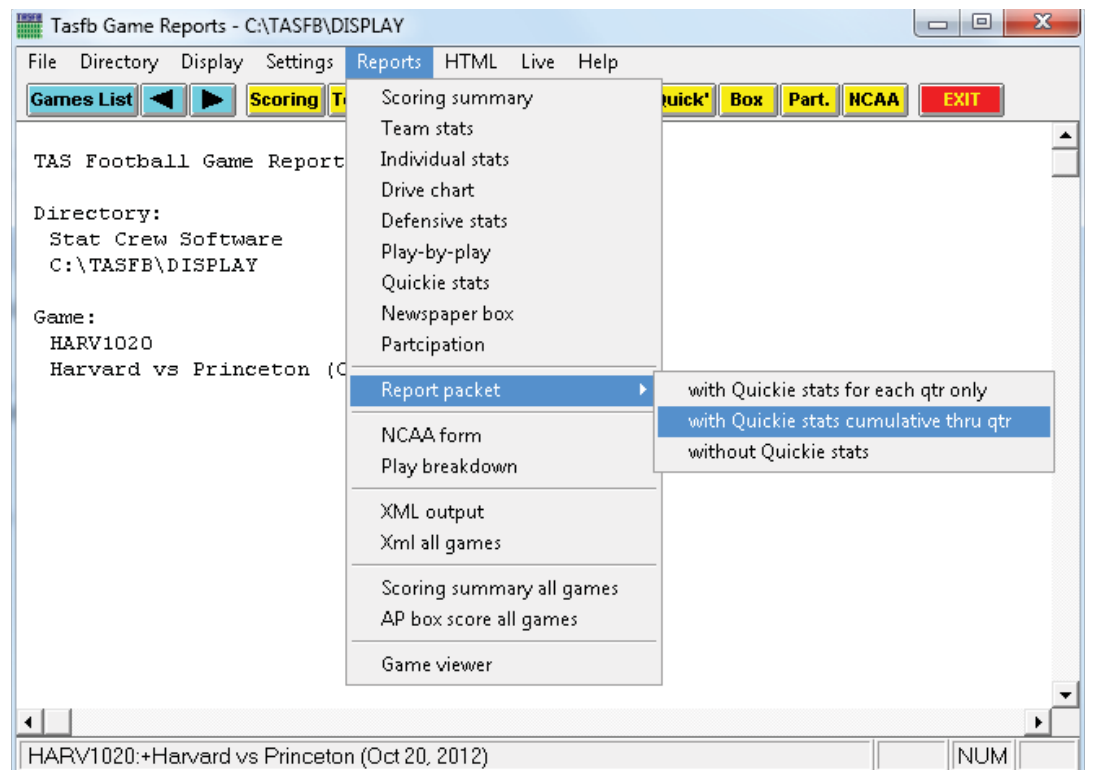
Auto-display and print report set for quick distribution during the game.

Print cumulative through a period, or only for selected period.

Print report packet, scoring summaries, and AP box scores.

Generate XML output for one or all games.

Generate HTML boxscores.



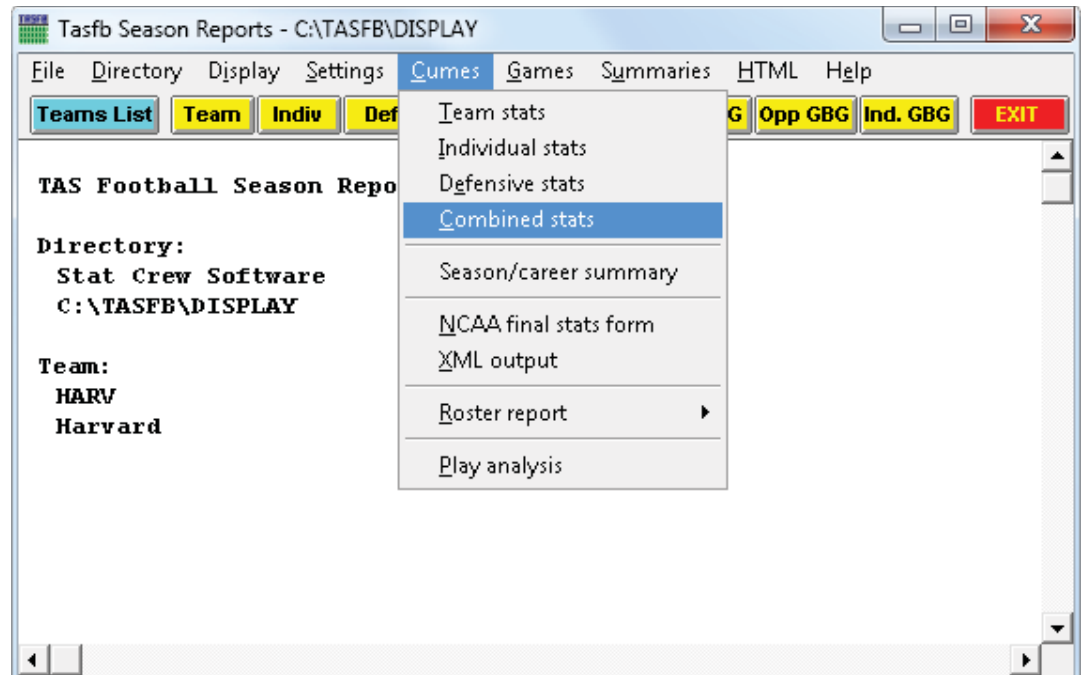
# STATCREW SOFTWARE

## • Season Reports

Game-by-game breakdowns, summary reports, superlatives, redzone stats and by quarter stats.

XML for NCAA reporting.

Generate HTML files for season stats.



## • Career Reports

Manually enter previous season totals and records, or "capture" from past season files.

Capture overall, conference-only, and vs. specific opponent.

Generate HTML files for career stats.

View and print alltime results and all-time records versus opponents.

